



Australian
International
School

English as an Additional Language (EAL) Programs



Unlock Success at AIS with our English as Additional Language (EAL) Programs

At the Australian International School (AIS), we warmly welcome students whose first language is not English. Our comprehensive and academically rigorous English as an Additional Language (EAL), Intensive English Stream (IES) and Preparatory Course for Secondary (PCS) programs are designed to help every student thrive, both academically, socially and emotionally.



Key Goals of the Programs:

- Equip students with the necessary English skills to ensure smooth and seamless integration into school life — inside and outside the classroom.
- Support students in developing a high level of English proficiency to access learning in mainstream classes with minimal EAL assistance.
- Provide a holistic education that allows students to engage in a range of specialist programs, including outdoor education, and after-school programs.

From Prep onwards, AIS offers tailored language support based on individual needs, ensuring all students have the necessary resources to succeed.

Our EAL program plays a crucial role in international university preparation for Secondary students, empowering them with the language and academic skills needed to pursue higher education at their preferred universities.

With a community representing over 50 countries, AIS proudly celebrates diversity and global perspectives, making every student feel valued and respected for their unique cultural background.

“AIS gave me the confidence and foundation to turn a childhood curiosity, one that started in my small garden in Changsha, into a lifelong passion for environmental science.”

– Judy, Class of 2024 IBDP (EAL Student)
National University of Singapore Undergraduate
(Received 9 Top-Ranked University Offers)



Elementary

Elementary EAL programs are available for students in Prep to Year 5 EAL. Entry criteria at each year level ensure students are on track to enter Year 6 programs successfully.

Year 1 to Year 5

Intensive English Stream (IES)	English as an Additional Language (EAL) in the Mainstream
<ul style="list-style-type: none"> • All students in the class are learning English as an additional language • Intensive teaching is targeted at accelerating English language acquisition • Additional full time educators support foundational reading, writing, speaking, and listening skills in the classroom • Welcoming students from diverse backgrounds, our program supports those with limited English proficiency to build confidence in academic and social English before joining mainstream classes • Students typically graduate and enter the mainstream in 7 months based on English proficiency test scores, observation and assessments • Students continue to receive EAL support in the mainstream class as needed 	<ul style="list-style-type: none"> • Students of varying levels of English proficiency in the homeroom from beginner to native • EAL Beginner and Transitioning level students receive varying levels of in-class (push-in/co-teaching) and small group (withdrawal/pull-out support) based on the student’s English proficiency and year level • Language support is timetabled during different blocks during the school day • Exiting support can take 1-3+ years depending on year level, prior exposure and student engagement • After graduating from the EAL support program, students are monitored and continue to receive differentiated support from their homeroom teacher

IES & EAL in the Mainstream

- Aligned with the IB PYP and robust literacy and numeracy standards
- Complete range of specialist programs weekly: Music, Mandarin, Art, Library sessions and Physical Education
- Inspires curiosity and critical thinking while nurturing responsible global citizens
- Extensive optional after-school programs (CCAs) including teams and clubs

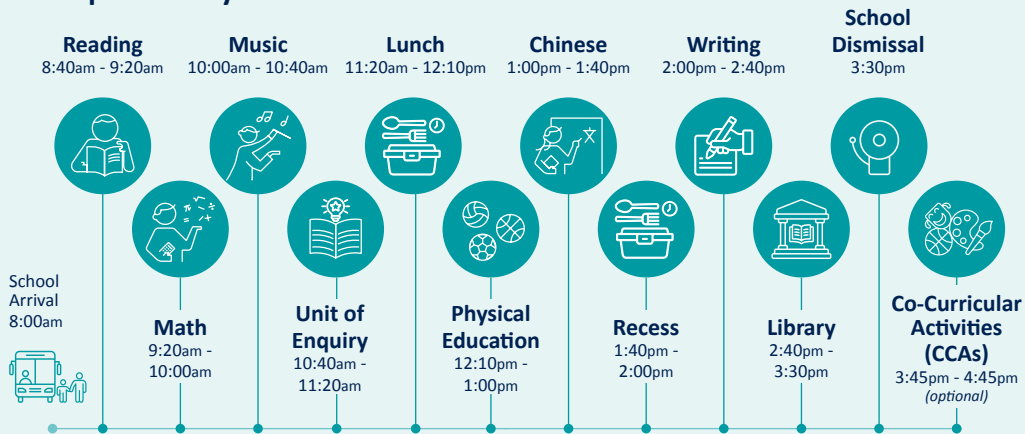
What are the differences between withdrawal (pull-out), co-teaching (push-in) and the Intensive English Stream support models?

- Intensive English stream: Intensive program that focuses on accelerated English language acquisition
- Withdrawal/Pull-out support: Students leave the homeroom to receive small group targeted support for English Language Acquisition
- Co-teaching/Push-in support: EAL Teachers join the homeroom class for targeted lessons and skills in English

Why IES vs Mainstream?

- Students in IES receive foundational language support with 1-2 additional educators in the classroom to accelerate language acquisition and build confidence with additional support
- Students in mainstream classes have a stronger foundation in functional English and often a greater proficiency in academic English

Sample Weekly Schedule



Language Entry Requirements

Students placement is based on one or more of the following:

- Pearson TELL (Elementary)
- iTEP SLATE (Secondary)
- Interviews
- Reports
- Teacher References

Building Foundations for Global Success

Our Secondary School provides comprehensive support in both English and academic subjects, ensuring students thrive in an international curriculum and beyond.

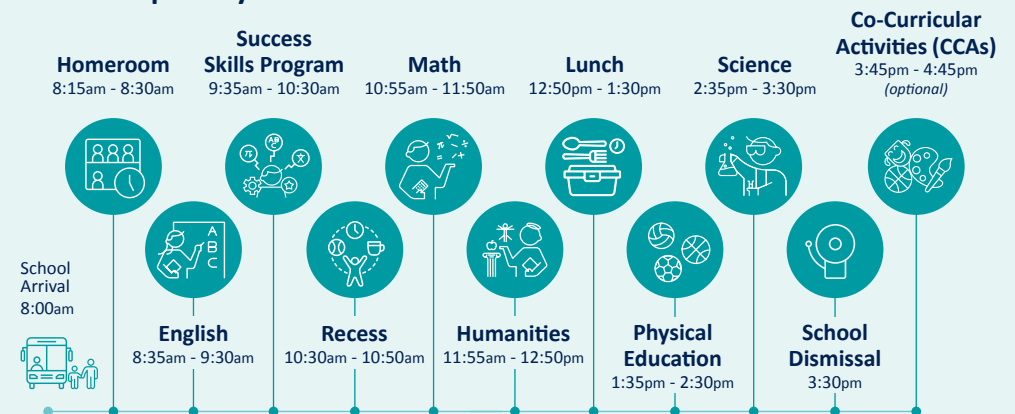
Key Highlights

- **Tailored Support:** Mainstream and sheltered EAL programs for Years 6–10, with intensive options for Years 6–9
- **Academic Readiness:** Entry criteria at each year level ensure students excel in the IGCSE, IBDP, or HSC pathways
- **Proven Outcomes:** Our EAL programs have empowered students to achieve offers from world-leading universities, including the **National University of Singapore (NUS), University College London (UCL), University of Melbourne, Nanyang Technological University, and the University of Sydney**

Year 6 to Year 9

Preparatory Course for Secondary (PCS) Year 6-9	EAL in the Mainstream Year 6-8
<ul style="list-style-type: none"> • Builds a strong English foundation for secondary school with intensive English support and modified curriculum • Dedicated pathway taught by English acquisition experts across core and specialist subjects • All students are learning English as a second language • Students exit into the mainstream in one year (or less) • Class size a maximum of 20 students 	<ul style="list-style-type: none"> • Students can access the curriculum without intensive English support • Students attend all mainstream classes except “English First Language” and take EAL English instead • 2x week, Science and Humanities are co-taught with an EAL Specialist • Students graduate from support within variable timeframes • Class size of maximum 18
Preparatory Course for Secondary (PCS) and EAL in the Mainstream	
<ul style="list-style-type: none"> • Aligned with rigorous international standards • Wide range of specialist classes • Prepared students for the IGCSE, IBDP and HSC 	<ul style="list-style-type: none"> • Daily focus on emotional, social and life skills • Extensive optional after-school programs (CCAs) including teams and clubs

PCS - Sample Day in the Life



Year 9 and Year 10

EAL Senior Studies Preparation Program (ESSPP) Modified IGCSE + EAL Support	The International General Certificate of Secondary Education (IGCSE) Complete IGCSE, No EAL Support
<p>Taught by EAL & subject matter experts:</p> <ul style="list-style-type: none"> • IGCSE Chinese/Spanish/French • IGCSE English • IGCSE Combined Science • IGCSE Enterprise or Global Perspectives <p>Taught by subject matter experts:</p> <ul style="list-style-type: none"> • IGCSE Chinese/Spanish/French • IGCSE Mathematics • 1 x Elective course (non-IGCSE) ie: Art, Music, Drama • EAL Academic English - IB Preparation Course <p>Students in this program:</p> <ul style="list-style-type: none"> • Take 5 IGCSEs and 1 non - IGCSE elective • Class sizes maximum 25 • Have a dedicated EAL teacher for more than 50% of their classes • 5 lessons per week for English, Science, Humanities, Mathematics 	<p>Taught by subject matter experts:</p> <ul style="list-style-type: none"> • IGCSE English First Language • IGCSE Coordinated Science (double award) • IGCSE Chinese First Language or Language other than English • IGCSE International Mathematics • 3 other elective subjects (some non-IGCSE e.g Music, Design Tech) <p>Students in this program:</p> <ul style="list-style-type: none"> • Take 6 - 8 IGCSE • Can achieve the full Cambridge IGCSE certificate • Class size of 25 max • No EAL support • 3 weekly lessons for each elective
ESSPP & Complete IGCSE	
<ul style="list-style-type: none"> • Daily focus on emotional, social and life skills • Mainstream Sport 	

FAQ

- 1. What is the difference between ESSPP and IGCSE?**
 EESSPP is a modified curriculum with IGCSE subjects which focus on language acquisition and content. Students in the IGCSE stream have a higher level of English and can access the program without support.
- 2. Can students change between ESSPP and full IGCSE programs?**
 ESSPP is a rigorous two-year program, designed to mirror the structure of IGCSE. As students advance, they gain the opportunity to sit external examinations for formal certification, offering EAL learners a distinctive and valuable pathway in Singapore unique to AIS.
- 3. How are students prepared for the IB or HSC by ESSPP?**
 The curriculum covers ATLs (Approaches to Learning) and Extended Essay elements to prepare for the IBDP or HSC option. Students have the skills to learn independently and practice in-depth research-style essays.
- 4. Can students in Year 9 PCS take IGCSE courses?**
 Students enrolled in PCS do not yet meet the English-level requirements for the ESSPP program at admission. However, if they progress quickly through PCS, they may become eligible to take selected IGCSE subjects.





**Australian
International
School**

1 Lorong Chuan Singapore 556 818
+65 6517 0247 (Admissions)
admissions@ais.com.sg

Australian International School Pte Ltd is registered by the Private Education Institutes (PEI), part of SkillsFuture Singapore (SSG) | PEI Registration Number: 199204405H | Period of Registration PEI: 6 July 2023 to 5 July 2027