



The Australian International School Preparation Course for Secondary School



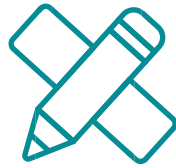
The Australian International School Preparation Course for Secondary School

The (AIS) Preparation Course is an intensive Semester long academic English program that prepares students for academic studies and is designed for students in Year 7, 8 and 9. The PCS course is aligned with the AIS school calendar and commences in two sessions, January to June and July to December. It is a face to face course conducted at the Australian International School, Singapore.

Through this cutting edge program, students will learn how to engage as part of the AIS community and will develop academic English through Maths, Science, Language and Humanities. Students will be developing their English skills in reading, writing, listening and speaking required to access other AIS mainstream classes. Our school values of respect, achievement and opportunity are embedded into our pastoral care programme to support students social and emotional development. Our highly skilled faculty are at the forefront of English language acquisition pedagogy and classroom techniques. AIS offers a range of content rich courses that meet the scholarly, emotional and linguistic needs of students eager to thrive at the next level.



**Students who do not successfully complete the programme in one school semester will receive an AIS PCS Course participation certificate. These students have the option of returning for one additional semester course immediately following the completed semester in which to meet the entry requirements for the AIS mainstream courses (inclusive of EAL support). Students are permitted a maximum of two consecutive semesters in which to meet the AIS PCS completion.*



English Ability Assessment

This course uses the English language proficiency assessments to ensure students enter the course with adequate language to make sufficient growth in their English skills to access future pathways at AIS. Student progress is monitored through a range of assessment data including ongoing course assessment, student approaches to learning and additional English Language proficiency assessments.

As part of the course assessment, students receive daily individualised feedback through classroom learning engagements, homework, quizzes, and tests in order to accurately monitor the progress of our students.

Unique Features

- Experienced instructors
- Innovative language teaching methods and resources
- 7 hours of instruction per day, for 5 days a week
- AIS aligned curriculum in Math, Science, Language, Humanities and Social Emotional Learning
- Full use of AIS facilities and resources
- AIS learning culture

The entry criteria are as follows:

Students admission to this course is based on successful application of English Proficiency assessments, previous school academic results and teacher references. Students must be age appropriate for their academic year placement. To be offered a placement in this course, students must score the following on the WIDA English proficiency test:

Results required to be offered placement in PCS		
WIDA English Proficiency test	Semester One (Jan-Jun)	Semester Two (Jul-Dec)
Year 7	Must score minimum of 1.0	Must score minimum of 1.5
Year 8	Must score minimum of 1.5	Must score minimum of 2.5
Year 9	Must score minimum of 2.5	Must score minimum of 3.0

The exit criteria are as follows:

To successfully complete the course and be awarded with an AIS PCS Course Completion Certificate, students may be offered the opportunity to transition into the Year 7, 8 or 9 Mainstream course (inclusive of EAL programme) currently offered at AIS. Students must attain the following criteria at the end of the Semester programme:

Results required to successfully complete PCS in all four language domains (speaking, listening, reading, writing)		
WIDA English Proficiency test	Semester One (Jan-Jun)	Semester Two (Jul-Dec)
Year 7	Must score minimum of 2.0	Must score minimum of 2.5
Year 8	Must score minimum of 3.0	Must score minimum of 3.5
Year 9	Must score minimum of 3.5	Must score minimum of 4.0

All students must demonstrate strong classroom performance on course assessments and receive teacher recommendations to successfully exit the AIS PCS.

**Students who do not successfully complete the programme in one school semester will receive an AIS PCS Course participation certificate. These students have the option of returning for one additional semester course immediately following the completed semester in which to meet the entry requirements for the AIS mainstream courses (inclusive of EAL support). Students are permitted a maximum of two consecutive semesters in which to meet the AIS PCS completion.*

Fees (inclusive of GST):

Application Fee:	S\$808*
Enrolment Fee:	S\$3,897*
Facility Fee:	S\$5,427*
Technology Fee:	S\$1020/ S\$318per annum
Tuition Fee:	S\$29,064 per semester

*one-time, non-refundable. Credit card fees may apply.



Accreditation:

In alignment with the Private Education Act 2009, a Committee for Private Education (CPE) has been established in Singapore to regulate the private education sector. All Private Education Institutes (PEIs) are required to comply with the regulations under the new Act in order to operate.

A certificate upon completion of the Preparatory Course for Secondary School is awarded by the Australian International School Pte Ltd (a CPE approved private education institution). The CPE details are as below.

CPE Registration Number : 199204405H

Period of Registration : 6 July 2019 to 5 July 2023

Speak to us today

After completing the course and successfully meeting the exit criteria, these students will be welcome to join AIS mainstream courses (with EAL Programme as required). AIS is the only school in Singapore offering the multiple pathways through the Australian Curriculum, IGCSE and International Baccalaureate. AIS is a fully accredited IB World School offering the Primary Years Program (PYP) and Diploma Program (DP) programs.

This program has been specifically developed to strengthen applications to international schools and is aligned closely with the Australian International Schools philosophy, to equip students to create their own unique future.

Safeguarding the welfare and wellbeing of students is a priority to AIS and the Cognita family of schools. AIS is committed to this critical duty care and therefore have boarding options available to students.



1 Lorong Chuan, Singapore 556818

Contact: **+65 6517 0247** | www.ais.com.sg

AIS is part of the global Cognita family of schools www.cognitaschool.com
Australian International School Pte Ltd is registered by the Committee for Private Education (CPE), part of SkillsFuture Singapore (SSG).